





109th LLC Meeting Presentation Slides

Monday 29th April 2024

AWE, Aldermaston

Agenda

- 10.00 - Introductions / Networking / Refreshments
- 10.30 -Windshield tour of Aldermaston
- 11.25 –Chair’s Opening Remarks
- 11.30 –Development Update/Transport update
- 12.00- Infrastructure Investment Update
- 12.20- ONR regulator update
- **12.40 - LUNCH / NETWORKING**
- 13.20 –Estates and Liabilities update
- 13.30 –EA and DNSR regulator update
- 14.00- ESH&Q update
- 14.15 - Emergency Planning / REPPIR/ DEPZ
- 14.25 – AWE Myth Busting
- 14.50- Community Update
- 15.00 - Any Other
- 15.15 - Close





Windshield tour of AWE, Aldermaston

Please bring your bags with you.



Chair's Opening Remarks

Janine Mantle

Corporate Affairs Director



Estate Development Update

Andy Burnett-Dale
Head of Estate Strategy & Planning



Transport Update



Travel Plan

- The Travel Plan, which identifies how AWE aims to further embrace sustainable travel, has been updated and agreed with West Berkshire Council.
- The plan currently focuses on further improving AWE's most successful initiative to date, car sharing. AWE have actually brought on board Mobilityways (owners of Liftshare, the car share software used by AWE) to ensure the maximum potential of the software is exploited.
- A marketing and communications campaign is also being designed between Mobilityways and AWE which will be rolled out this year to actively encourage further staff to car share.
- In addition to car sharing, AWE are actively looking at how walking / cycling and passenger transport connections can be improved to and from our sites.

Feasibility Studies



- Feasibility studies have been undertaken by Mott MacDonald that look at the potential to:
 - complete a foot / cycleway connection between Aldermaston village and AWE.
 - improve foot / cycle connections between Tadley and AWE
 - improve passenger transport connections to Aldermaston and Burghfield

- Studies are still to be finalised, but initial recommendations identify:
 - it will be extremely difficult to complete a foot / cycleway connection between Aldermaston village and AWE that would be well used and offers value for money
 - that the 'usability' of Winkworth Lane is improved, together with possible better connections between the A340 and the service road that runs east-west to the north of Tadley
 - that AWE look to potentially provide a new public / private service to Aldermaston Station and / or Newbury / Thatcham and improve existing public / possibly provide a private service to Reading.

Next Steps



- Further work is required to follow up on the feasibility study recommendations
- A staff travel survey is currently being undertaken. This will provide valuable data including preferences for passenger transport improvement options.
- Mobilityways are also undertaking an analysis of postcode data using their CommuteIQ software to identify potential sustainable transport options that could be implemented to Aldermaston and Burghfield.
- Once this work has been completed, it will be possible to look at providing further Travel Plan improvements, including potential foot / cycleway improvements and passenger transport connections, together with further encouragement to car share, tailored to staff home postcode locations and desires.
- This strategy will provide further opportunities for AWE to travel sustainably and reduce the proportion who travel alone by private car, thereby providing benefits to the surrounding community



Infrastructure Investment Update

Andrew McNaughton and Hannah Marsh

Executive Director Infrastructure, Fissile Programme and Head of Communications, Future Materials Campus

The Future Materials Campus

“There will be significant investment in AWE’s infrastructure in Aldermaston, including the Future Materials Campus (FMC).”



**Delivering the UK’s
Nuclear Deterrent as
a National Endeavour**

The Future Materials Campus



Local council engagement



Reading
Borough Council

Working better with you



WOKINGHAM
BOROUGH COUNCIL



**Basingstoke
and Deane**

Community engagement

Please provide suggestions via the feedback form for where you think these drop-in sessions should be and if you would like us to explain more at your parish/town council meetings.

Hub update



Regulator' Update



Gareth Lock



**Office for
Nuclear Regulation**



LUNCH / NETWORKING (40 minutes)



Estates Update

Johann Walker
Director Estate Management

Protestor activity



- Regular monthly 'Women's Peace Camp' continues on 2nd weekend of each month.
- No other upcoming planned Protest activity



Community concerns*



Date	Category	Summary of concern	Outcome
11/10/23	Noise	Tannoy noise able to be heard East of the Boiler house gate.	Immediate corrective action taken to minimise impact. Categorised as a concern and closed.
18/03/24	Concern	Report of sandy/murky water in neighbours' fishpond. The caller was convinced it was coming from AWE.	Following extensive investigation determined that the cause was not AWE. Person was satisfied with process and outcome.

*October 2023 – March 2024

Document reference:

Major Site exercises at AWE



Major Exercises

- **4th October (AWE A Level 1) & 5th December (AWE B Level 1)**
- **31st January (AWE B Security Exercise) & 21st Feb (AWE A Security Exercise)**

A number of AWE and regulatory assessed exercises have been delivered at AWE sites since October 2023 (as per above). Level 1 exercises focus on safety responses and Security Exercises (Secure and Safe aspects) – All exercises naturally have joint safety and security facets.

The exercises are jointly observed by the from Office for Nuclear Regulation (ONR), Defence Nuclear Safety Regulator (DNSR), Defence Fire Service, MoD, Defence Nuclear Security and also our own Internal Regulation Team.

As with all exercises, opportunities to learn and improve were identified, many positive aspects were also fed back into the post-exercise wash-up meetings. Overall, the exercises was assigned as an 'adequate' (green) assessment of our arrangements which is a positive outcome.

These exercises are vitally important to us all at AWE, as it gives us reassurance that we can deliver an effective response to emergencies and security events, which is not only important to all of us as staff, but for members of the public as well.

Estate Improvements

- In the last year we have demolished 20 facilities totalling a gross internal area of 4201m².
- We have initiated a significant characterisation exercise within South Group (B) with the aim to commence demolition activities 2025.
- We are due to initiate the tender exercise (via the CCS demolition framework) for a 4+2 year demolition delivery partner in April with the intention of having the new partner onboarded by the end of 2024.



C21.1 Demolition
Before & After



Regulators' Update



Rob Green



Karl Pallester





Environment, Safety and Health Update

Nick Bolton

Senior Manager, ESH Service Delivery



Personal Safety

Injuries in the 12 months to the end of February 2024 by cause of injury and impact on the individual

OFFICIAL

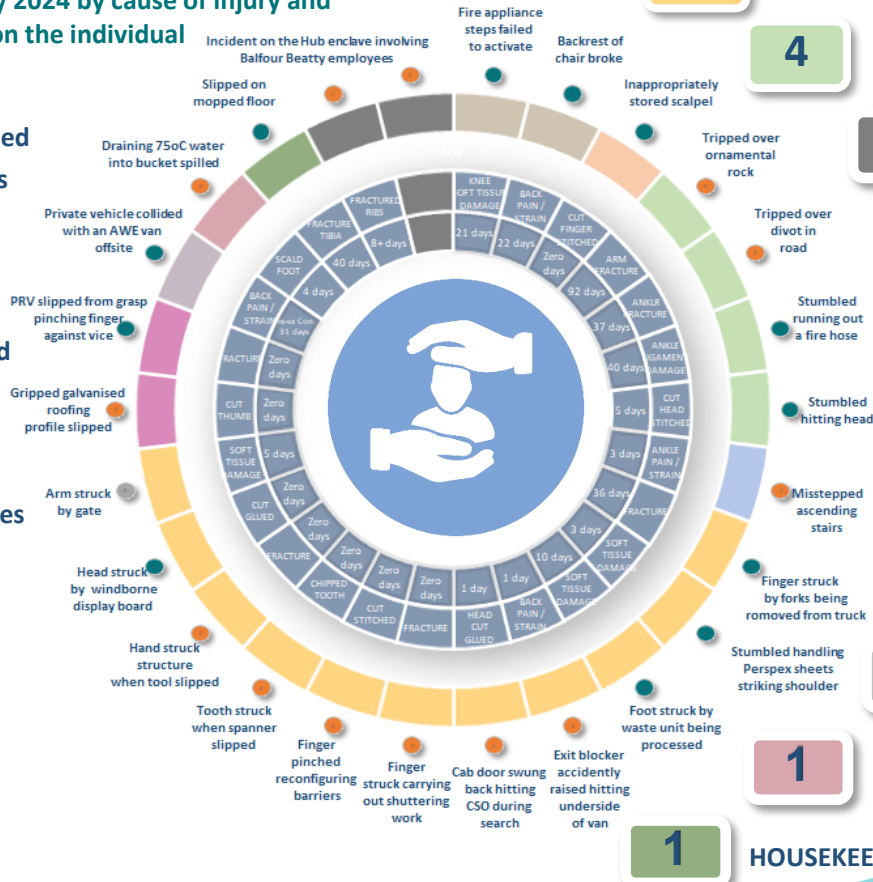


26 people sustained Recordable Injuries

- Contractors: 13 events
- Staff: 12 events
- MDP: 1 event

17 injured parties required one or more days away from work to recover resulting in **359** days lost due to work related injuries

OSHA Injury Rate:
0.306
per 200,000 hours worked



11

PERSON STRUCK AGAINST / BY OBJECT

4

FALL OF PERSON AT SAME LEVEL

2

INCIDENT INVOLVING BALFOUR BEATTY EMPLOYEES

2

OBJECT DID NOT OPERATE AS EXPECTED

2

LOSS OF GRIP WHEN MANUAL HANDLING

1

INAPPROPRIATELY STORED ITEM

1

PERSON MISPLACED FOOTING

1

ROAD RAFFIC ACCIDENT

1

THERMAL BURN

1

HOUSEKEEPING

Process Safety



Process Safety performance remains at an acceptable risk level. There have been four Process Safety Loss of Control/Containment events raised since November 2023. All four events have been investigated and appropriate preventative actions have been put in place. Process Safety training remains a priority and the Process Safety Leadership training in partnership with Cogent Skills continues to be delivered and is now reaching out into other areas. The intention remains for this course to become a key course for all senior leaders at AWE.

The Process Safety Team are also continuing to develop virtual reality training that can be used to raise hazard awareness amongst staff at all levels of the organisation. Phase 1 is nearing completion and will be shared with the Executive in August 2024.

Number of Events Notified to the ONR by Calendar Year

2015	2016	2017	2018	2019	2020	2021	2022	2023	2024 to end of February
22	25	38	38	37	64	69	61	39	3

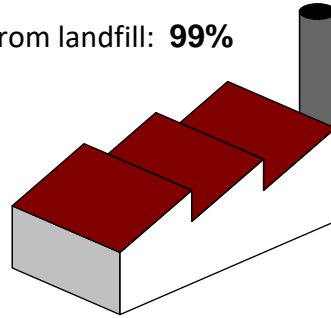


Our Commitment to Protecting the Environment & People



WASTE MANAGEMENT

The Environment Management target for diverted from landfill: **99%**
Total waste diverted from landfill: **99.8%**



NUCLEAR WORKER

Annual UK Occupational Dose Limit: **20,000 μ Sv**
AWE Individual Radiation Dose: **350 μ Sv**



DIRECT DOSE AT SITE BOUNDARY

Maximum Dose Aldermaston: **3 μ Sv**
Maximum Dose Burghfield: **indistinguishable from natural background**

DISCHARGE TO AIR

Assessed Dose Aldermaston: **1.8 μ Sv**
Assessed Dose Burghfield: **< 0.1 μ Sv**

TRADE EFFLUENT

Assessed Dose Aldermaston: **< 0.1 μ Sv**
Assessed Dose Burghfield: **< 0.1 μ Sv**

DISCHARGE TO WATER

Assessed Dose Aldermaston Stream: **< 0.1 μ Sv**

RADIATION DOSE PUT INTO CONTEXT:

Annual UK non-occupational radiation dose is 2,700 μ Sv.
This is the average level of radiation dose that a person resident in the UK will receive each year from background sources of radiation.

ASSESSED PUBLIC DOSE PUT INTO CONTEXT:

A dose of 10 μ Sv (microsieverts) is comparable to that expected to be received from eating a 100g bag of Brazil nuts.



AWE Emergency Planning and Preparedness Update

Scott Davies-Hearn

Manager Emergency Response

AC-LC11 Technical Lead

TA – Emergency Arrangements & Response



AWE Myth Busting

Ian Rogers
Chief Nuclear Officer

Questions and presumptions about AWE



1. How dangerous are the radiation levels around AWE for local residents?

2. Do you all make bombs?

3. Do you have dangerous materials on site?

4. Do you have a red button to press to set off 'the bomb'?

5. Do you test the warheads?

6. Do you have underground tunnels that lead to Tadley and beyond?

7. Do you have a nuclear reactor on site?

8. Building warheads is all we do

9. AWE decides when to use the bombs



Community Update

Kavita Thandi and Katie Davidson

Responsible Business Manager and Responsible Business Specialist
Corporate Affairs

Our Community



Supporting local charities



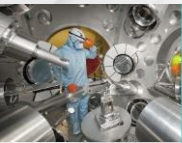
**Time to Give
Volunteering**



Environmental
Orchards, flood protection,
wild meadows, solar farms



Sponsorship
QMC and sponsored
Masters, PhDs, Post-docs



Schools' engagement

Community Magazine
Connect and Focus

National STEM Days
Ada Lovelace Day, Science week,
Environment Day

**Increased apprentice
intake**

**Employee ambassador
network**

**Annual Give a Gift
collections**

All the things we get up to!

Primary

- QMC- Primary Science Centre
- Guess my job workshops
- People like me workshops
- Primary Science Challenge (RI prize)
- Assemblies
- STEM days

Secondary/Colleges

- Mock interview support
- Career fairs
- Career talks/assemblies
- Guess my job workshops
- People like me workshops
- Business speed networking
- Mentoring
- Virtual careers webinar
- Career Lead event on A site

What we have achieved!



Primary
Schools



Secondary schools
and colleges

Total

Number of
young
people
reached



4,893

42,466

47,359

Number of
schools
reached



30

82

112

September 2023-March 2024



What are your thoughts on what we already do?

Is there anything else you would like to see us do?



Any other business / Q's



Next Meeting Date- 7th November 2024