





# 106th LLC Meeting Presentation Slides

**Wednesday 23 November 2022**

**The AWE Rec Soc, Aldermaston**



# Agenda

- Chair's Opening Remarks
- Environment, Safety and Health Update
- Operations Update
- Emergency Plan / REPPIR
- Development Update
- Ask The Regulators
- **BREAK**
- Community Update
- Future Meetings Survey
- Any Other Business / Q&A
- Close



# Chair's Opening Remarks

**Janine Mantle**

Corporate Affairs Director



# Environment, Safety and Health Update

**Nick Bolton**  
ESH&Q Service Delivery Lead



# Personal Safety

**16** people sustained Recordable Injuries in the 12 months to the end of October 2022

**14** injured parties required one or more days away from work to recover (LTIF Rate 0.182)

- Most injuries arise from:
- Manual handling tasks
  - Lapse in spatial awareness

OSHA Injury Rate: **0.208**  
 OSHA Rates per 200,000 hours worked

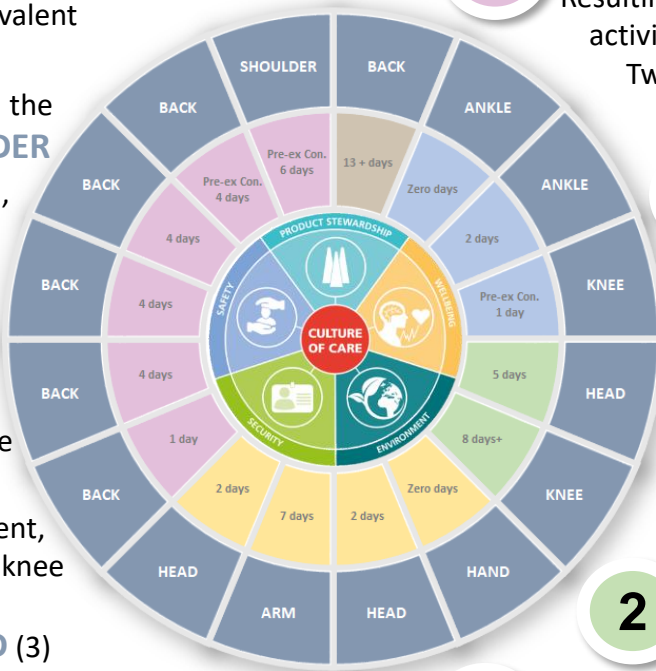
Injuries resulting in **BACK PAIN (6)** were most prevalent

Injuries to areas from the **FINGERS TO SHOULDER (4)**: sutured thumb, dislocated shoulder, soft tissue damage, fractured wrist

Injuries to areas from the **ANKLE TO THIGH (4)**; included a torn ligament, fractured knee

Injuries to the **HEAD (3)** resulting in: symptoms of a concussion, loss of consciousness, sutured cut

Note: Some injured parties sustained more than one injury



**6**

**MANUAL HANDLING:** Resulting from lifting, pulling, pushing activities involving weight and/ or effort. Two incidents involved the aggravation of a pre-existing condition

**4**

**STRUCK AGAINST / BY:** Struck tooling  
 Struck against wall  
 Struck by a dropped tooling  
 Struck by a falling box

**3**

**SLIP / MISSTEP / FALL:** Slip off curb  
 Foot slipped into a pothole  
 Misstep in low lighting

**2**

**TRIP / FALL OF PERSON AT SAME LEVEL:** Tripped over hose  
 Tripped over a metal bracket

**1**

**OBJECT DID NOT PERFORM AS EXPECTED:** chair moved backwards causing a fall

# Process Safety



Process Safety performance remains at an acceptable risk level. There have been no Process Safety events raised during the period. Process Safety training for supervisors remains an ongoing focus, increasing Process Safety knowledge across the organisation supporting supervisors who supervise in high hazard environments. The Leadership Process Safety training in partnership with Cogent Skills is now being delivered to leaders at AWE with an initial focus on Operations. The intention remains for this course to become a key course for all senior leaders at AWE.

The Process Safety Team are also working to develop virtual reality training that can be used to raise hazard awareness amongst staff at all levels of the organisation.

## Number of Events Notified to the ONR by Calendar Year

2012	2013	2014	2015	2016	2017	2018	2019	2020	2021	2022 to end of Oct.
34	31	28	22	25	38	38	37	64	69	46

# Our Commitment to Protecting the Environment & People



## WASTE MANAGEMENT

The Environment Management target for diversion from landfill: **98%**

Total waste diverted from landfill: **99.8%**



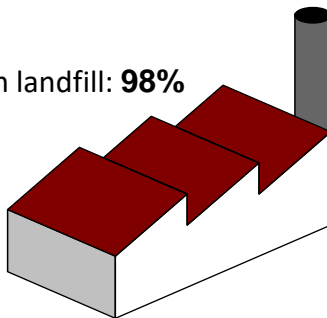
## NUCLEAR WORKER

Annual UK Occupational Dose Limit: **20,000  $\mu\text{Sv}$**

AWE Individual Radiation Dose: **1,510  $\mu\text{Sv}$**

## RADIATION DOSE PUT INTO CONTEXT:

Annual UK non-occupational radiation dose is 2,700  $\mu\text{Sv}$ .  
This is the average level of radiation dose that a person resident in the UK will receive each year from background sources of radiation.



## DISCHARGE TO AIR

Assessed Dose Aldermaston: **1.79  $\mu\text{Sv}$**

Assessed Dose Burghfield: **< 0.0001  $\mu\text{Sv}$**

## TRADE EFFLUENT

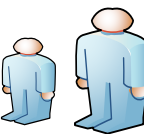
Assessed Dose Aldermaston: **0.0038  $\mu\text{Sv}$**

Assessed Dose Burghfield: **< 0.0001  $\mu\text{Sv}$**



## DISCHARGE TO WATER

Assessed Dose Aldermaston Stream: **0.0001  $\mu\text{Sv}$**



## PUBLIC DOSE

The calculated doses above represent **minute fractions** of the dose constraint set by the Environment Agency of **500  $\mu\text{Sv}$**  per year for a nuclear site.

## ASSESSED PUBLIC DOSE PUT INTO CONTEXT:

A dose of 10  $\mu\text{Sv}$  (microsieverts) is comparable to that expected to be received from eating a 100g bag of Brazil nuts.



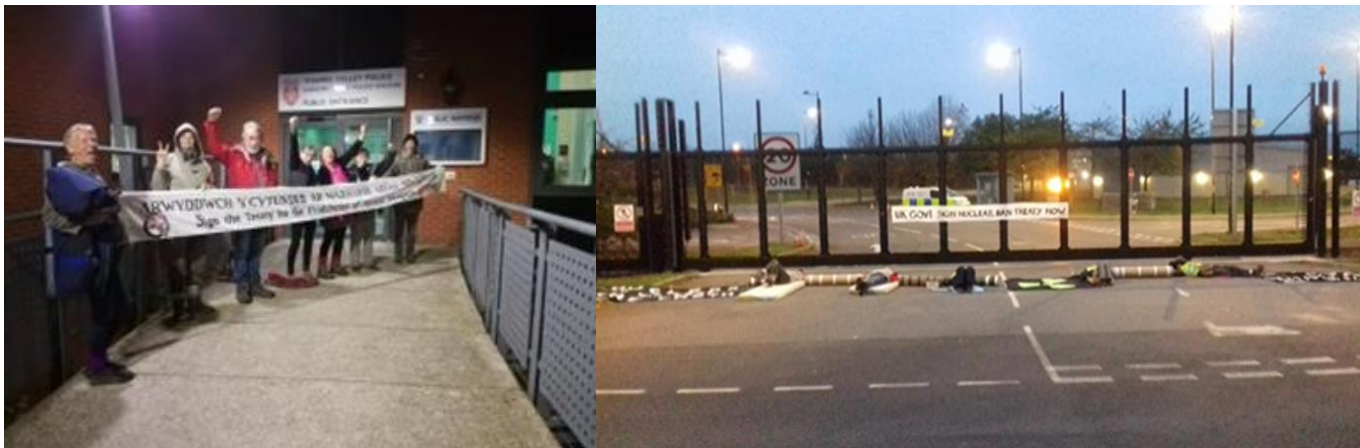


# Operations Update

**Johann Walker**  
Head of Operational Site Services & Resources

# Protestor activity

- Regular monthly 'Women's Peace Camp' continues on 2<sup>nd</sup> weekend of each month.
- No upcoming planned activity



# Community concerns\*



Date	Category	Summary of concern	Outcome
29/7/22 (Friday)	Noise	Resident reported an alarm sounding. The alarm activation was separately identified, investigated and reset	Corporate Comms dealt with the enquiry to the satisfaction of the resident.

\*June to October

# Major Site exercise at AWE(A)



**On 12th October, a major site exercise was carried out on the Aldermaston site. This was our annual level 1 exercise to test our LC/AC 11 Emergency Arrangements.**

The exercise was observed by regulators from Office for Nuclear Regulation (ONR), Defence Nuclear Safety Regulator (DNSR), Defence Fire Service, MoD, Defence Nuclear Security and also our own Internal Regulation Team.

Whilst some learning opportunities were identified, many positive aspects were also fed back into the post-exercise wash-up meetings. Overall, the exercise was assigned as an 'adequate' (green) assessment of our arrangements which is a positive outcome.

These exercises are vitally important to us all at AWE, as it gives us reassurance that we can deliver an effective response to emergencies, which is not only important to all of us as staff, but for members of the public as well.



# AWE Emergency Planning & Preparedness

**Carolyn Richardson**

Service Manager – Joint Emergency Planning Unit

# Off-Site Emergency Planning Update 23 Nov 2022

Carolyn Richardson

Service Manager – Joint Emergency Planning Unit  
Bracknell Forest, RBWM and West Berkshire Councils

# Activities July 22 to Oct 23

---

- ❑ Progressing 6 modular exercises action plan
- ❑ Plan revision
- ❑ Multi-Agency Training on the new plan
- ❑ Revised schools guidance
- ❑ Regular Off-Site Emergency Planning Group Meetings
- ❑ Engagement with other LAs through the National LA Nuclear Working Group
- ❑ Local Plan development and Guidance
- ❑ No incident responses relating to AWE

# Look forward Nov 22 – Apr 23

---

- ❑ Development control process completed.
- ❑ DEPZ determination as part of 3 yr cycle
- ❑ Plan revision
- ❑ Public Information Booklet and Website updates
- ❑ Undertaken Training sessions on the new plan
- ❑ Provision of training to the LLC – Feb 23
- ❑ Aldex 23
- ❑ And repeat!





# Any Questions?

---



# AWE Emergency Planning and Preparedness Update

**Scott Davies-Hearn**

Manager Emergency Response

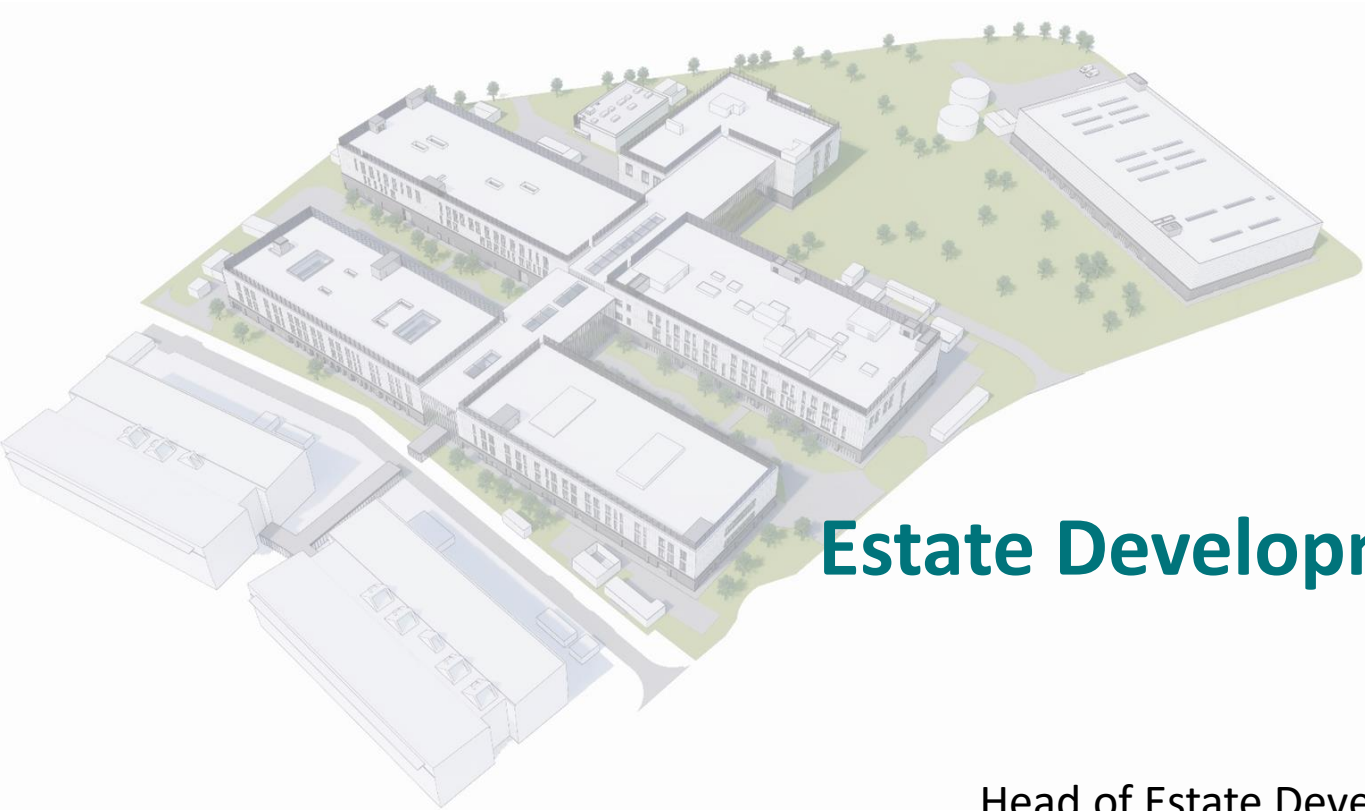
AC-LC11 Technical Lead

TA – Emergency Arrangements & Response

# Recent / Upcoming Activities



- Roll out of company wide Automatic External Defibrillators (AEDs) to compliment those held by our emergency responders
- October - AWE A (LEVEL 1 DEMONSTRATION EXERCISE) – Successfully delivered and assessed by the regulators as an adequate demonstration of the AWE emergency response arrangements
- Completion of the 2022 REPIIR assessment (WBDC will provide a further update in due course)
- Continued provision of support to WBDC in delivering awareness training regarding AWE
- December – AWE B (LEVEL 1 DEMONSTRATION EXERCISE)
- Provision of support to ALDEX planning



# Estate Development Update

**John Steele**  
Head of Estate Development and Planning

# Ask the Regulators

**Gary Cook**



**Rob Green**





**BREAK (10 minutes)**



# Community Update

**Claire Lockwood**

Senior Manager Community Engagement  
Corporate Affairs

# Community Update



## Volunteering

Our people continue to utilise AWE's 'Time to Give' programme.

Our staff use their volunteering time to share their skills and support our local communities.



## Destinations Expo - Newbury

Destinations Expo was an interactive careers fair hosted at Newbury College to raise awareness of the wide range of industries and sectors available locally.



## Festive Collection 2022

As AWE is now a Non Departmental Public Body we are not allowed to do any fundraising as a company. AWE has a strong record of supporting local communities and every year members of staff volunteer to organise and donate to a Christmas charity collection.







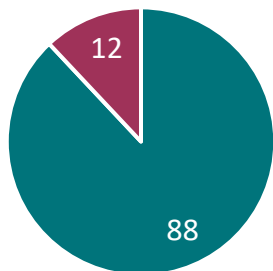
# LLC Survey Results

**Discussion: How we work together and run meetings**

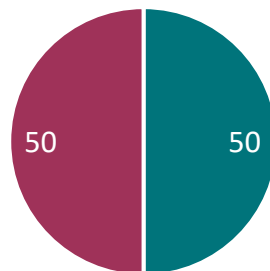
**Chris Daniels**

Senior Manager, Environmental, Social and Governance, Corporate Affairs

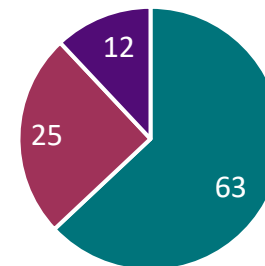
### How many times a year would you like to meet?



### What is your preferred format of the meetings?



### How long should meetings be?



■ 3 times per year ■ 4 times per year

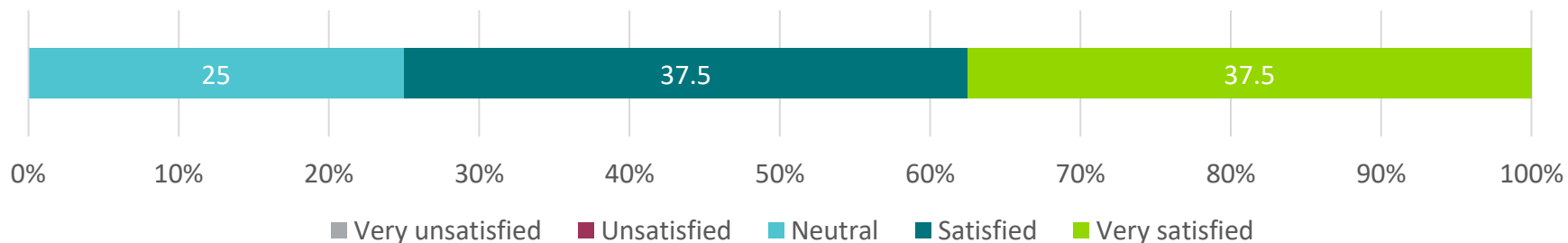
■ In person ■ Online, with an annual face to face

■ 2 hours

■ More than 2 hours

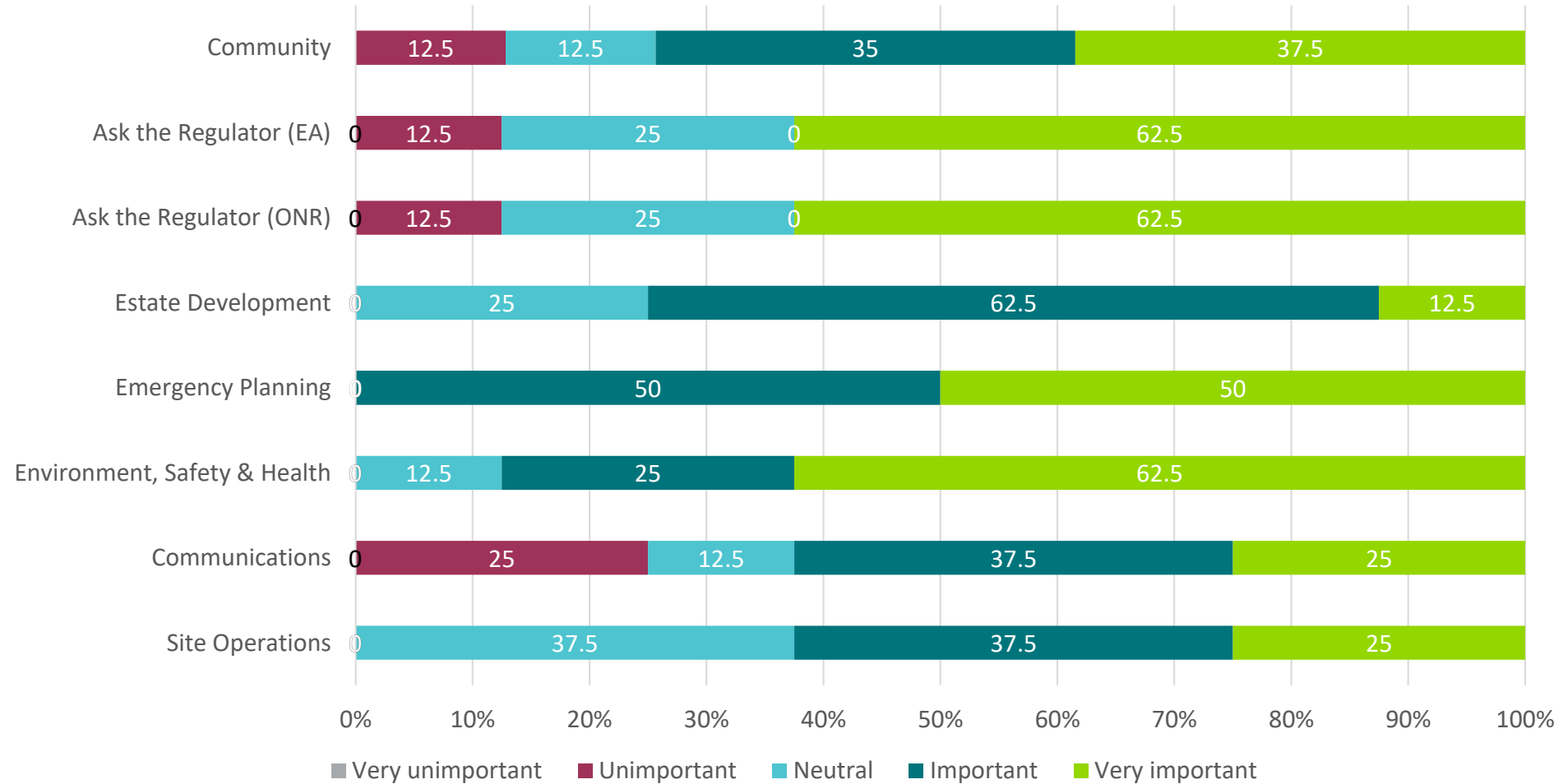
■ Less than 2 hours

### How satisfied are you with LLC meetings?



■ Very unsatisfied ■ Unsatisfied ■ Neutral ■ Satisfied ■ Very satisfied

## How important is it that the below topics are covered at meetings?





# Any other business / QA's

# 2023 Meeting Dates



**TBA**